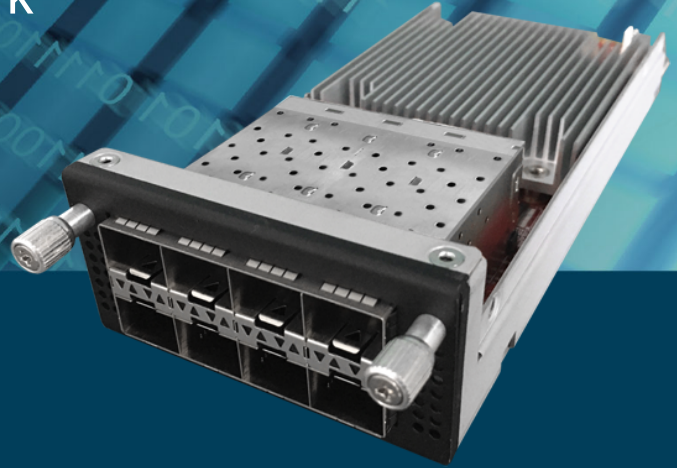


NIN-83080

8 Ports 10 GbE Fiber Network Adapter



Intel E810-CAM2 LAN Controller
8 x SFP+ 10 GbE Ports
Proprietary PCIe Gen3 x8

Specifications

Model Name	
Platform	
Form Factor	CASwell NIC Module
LAN Controller	1 x Intel E810-CAM2
Ethernet Port	8 x SFP+ 10 GbE Port(s) on board, Up to 8 x Ethernet Port(s) with maximum 80GbE bandwidth
Bus Type	Proprietary PCIe Gen3 x8
Dimension (WxDxH)	75mm x 185mm x 16mm (3" x 7.4" x 0.64")
Operation & Certifications	
Operating Environment	Temperature: 0 - 45°C (32 - 113°F), Humidity: 20 - 90% RH
Storage Environment	Temperature: 0 - 70°C (32 - 158°F), Humidity: 5 - 95% RH
OS Support	Linux / Windows

